

plus+liner FRP WALL & CEILING PANEL

NEW GENERATION OF WALL PROTECTION

Plus+Liner FRP wall and ceiling panels are a new generation of Fiberglass reinforced liner panels. Engineered to provide maximum chemical & Impact resistance as well as sanitation protection with minimum maintenance, without the high costs of other materials.

Plus+Liner FRP Panels have been designed with unique surface and physical characteristics to increase performance in the following areas: physical properties, chemical resistance, sanitation protection, clean ability, UV protection, and panel discoloration.

SANITATION PROTECTION / CLEAN WITH EASE

Our unique surface design offers wider spaced out peaks and valleys texture as well as a Gel Coat surface which allows impeded dirt and bacteria to be easily cleaned from the crevasses with out any scrubbing or brushing required.

Using our Vinyl Molding and Sealants during installation you can create a watertight surface. This makes our panels mold and mildew resistant suitable for meat facilities, carwashes, and laboratories.

TOUGH!

Plus+Liner FRP Panels features higher quality resins and increased fiberglass content, which increases its physical properties and lowers the filler content over other leading FRP brands. Our liners provide resistance against abrasions, scratches, impacts, and shattering. The panels can be used in a wide array of applications from a sanitation wall surface in a kitchen to a tough impact resistant wainscoting in warehouses to protect against forklift damages.

MAXIMUM CHEMICAL RESISTANCE

With higher quality resins and gel coat surface not only does it make our panels TOUGH! but it also increases the chemical and corrosion resistance our panels making them resilient to almost all chemicals & stains. The Gel Coat surface and UV inhibitors create a UV resistant surface causing the panel to stay its original color longer with no fading and deteriorating from its original form. This makes our product suite the needs of chemical plants, agricultural facilities and other types of severe environments.

WHERE TO USE *plus+liner* PANELS

Kitchens, Restrooms, Laundry rooms, Showers, Rumpus rooms, Supermarkets, Hotels & Motels, Convenience Stores, Day Care Centers, Kennels, Locker Rooms, Schools, Car Washes, Agricultural Facilities, Correctional Facilities, Refrigerated Warehouses, Laboratories, Storage areas, Chemical Plants.

SPECIFICATIONS

- **PRODUCT:** Fiberglass Reinforced Polyester Panels
- **WIDTH:** Standard 4 ft. Panels
- **ACCESSORIES:** Vinyl Moldings & Rivets available
- **SURFACE CHOICES:** Textured - Gel Coat or Smooth - Gel Coat
- **LENGTH:** 8 ft., 9 ft., 10 ft., 12 ft., and Roll Stock lengths available
- **RECOMMENDED ADHESIVES:** Water & Solvent Based FRP Adhesive

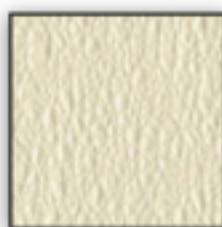
plus+liner 0.090" THICK, CLASS C - COLOR SELECTIONS:



White



Ivory



Almond



Beige



Khaki



Silver



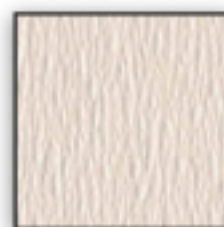
Light Grey



Medium Grey



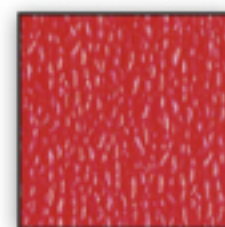
Yellow



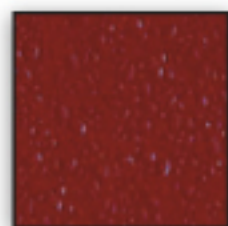
Coral



Blue



Red



Burgundy



Brown

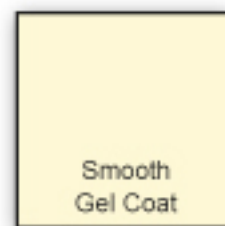


Black



Smooth
Gel Coat

White



Smooth
Gel Coat

Almond



Smooth
Gel Coat

Light Grey

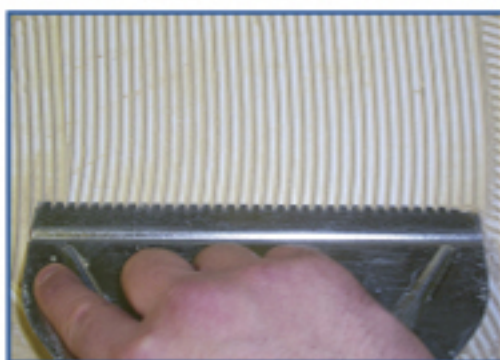
plus+liner FRP WALL & CEILING PANEL

plus+liner FRP ACCESSORIES: VINYL MOLDINGS & NYLON DRIVE RIVETS



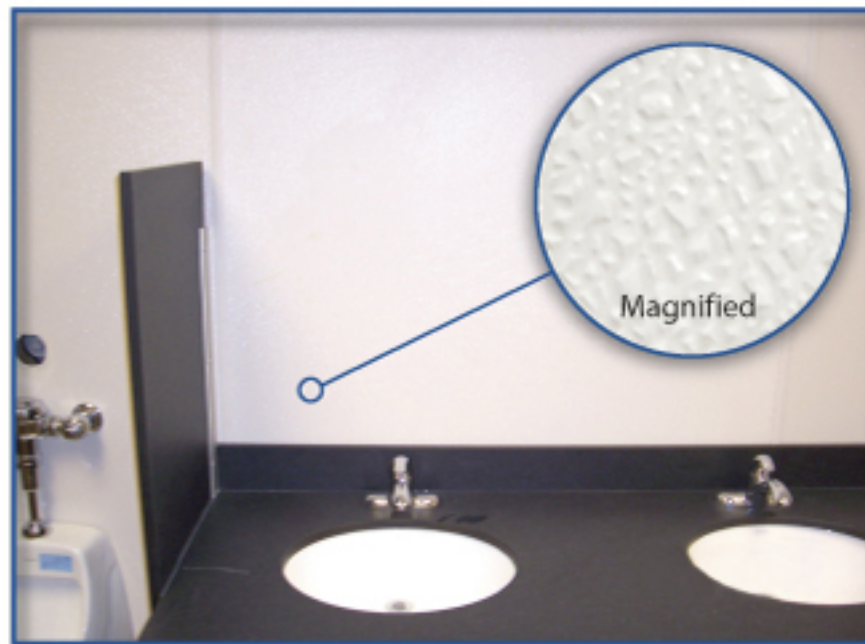
INSTALL KEY POINTS

- Panels to be installed over dry, clean, solid substrate surfaces.
- FRP Panel to be cut to size using a fine tooth saw blade with carbide tip.
- FRP adhesive to be applied to clean & dry substrate.
- Expansion gaps: 1/4" between ceiling & base and 1/8" between panel.



V-Notch Trowel size:
1/4" deep x 3/16" wide
x 1/2" on center.

Contact us for a complete installation guide.



CERTIFICATIONS & APPROVALS

CFIA / AGRICULTURE CANADA:

Plus+Liners are accepted for use in Agriculture Canada facilities.

ASTM:

Plus+Liners are manufactured according to industry standard ASTM D-3841-97

CAN/ULC – S102 / ASTM E84

Surface burning characteristics of building materials.

TYPICAL PHYSICAL PROPERTIES

Property	Test Method	Unit	Class III / C Results	Class I / A Results
Abrasion Resistance	TABOR W/L	% WT Loss	0.251	0.358
Flexural Strength	ASTM D-790	PSI	17,000	10,000
Flexural Modules	ASTM D-790	PSI	6.0 x 10 ⁵	3.1 x 10 ⁵
Tensile Strength	ASTM D-638	PSI	8,000	7,000
Tensile Modulus	ASTM D-638	PSI	9.43 x 10 ⁵	3.6 x 10 ⁵
Barcol Hardness	ASTM D-2583	Avg.	50	35
Water Absorption 21°C @72hrs.	ASTM D-570	%	0.17	0.72
Flame Spread	ASTM E-84	N/A	<150	<25
Smoke Generation	ASTM E-84	N/A	<270	<335

DISTRIBUTED BY:

**PRE-LAMINATED
PANELS AVAILABLE**

plasticsplus^{td.}

Ph. 1-888-443-4182